

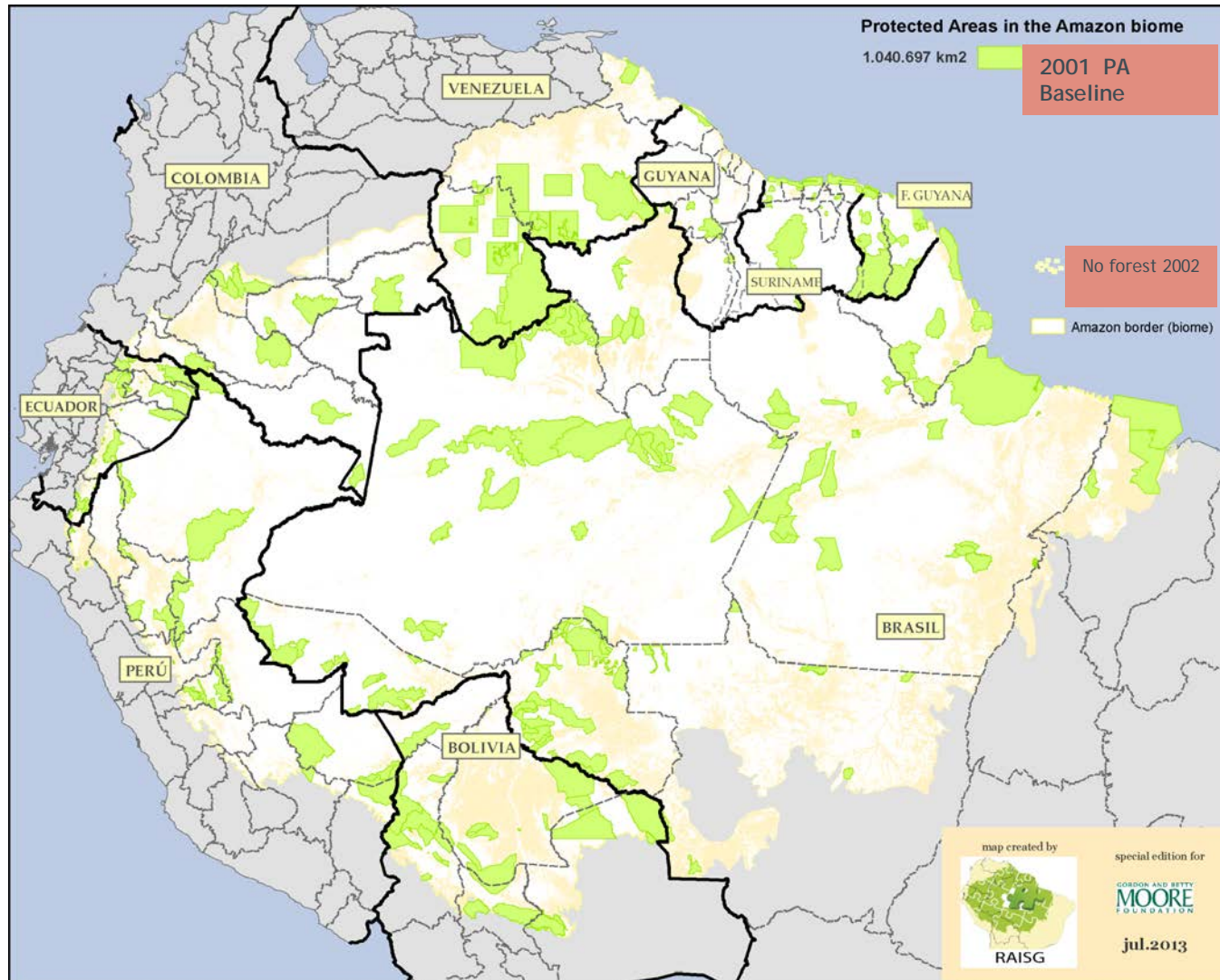
Andes-Amazon Initiative M&E System

Paulina Arroyo, AAI Program Officer

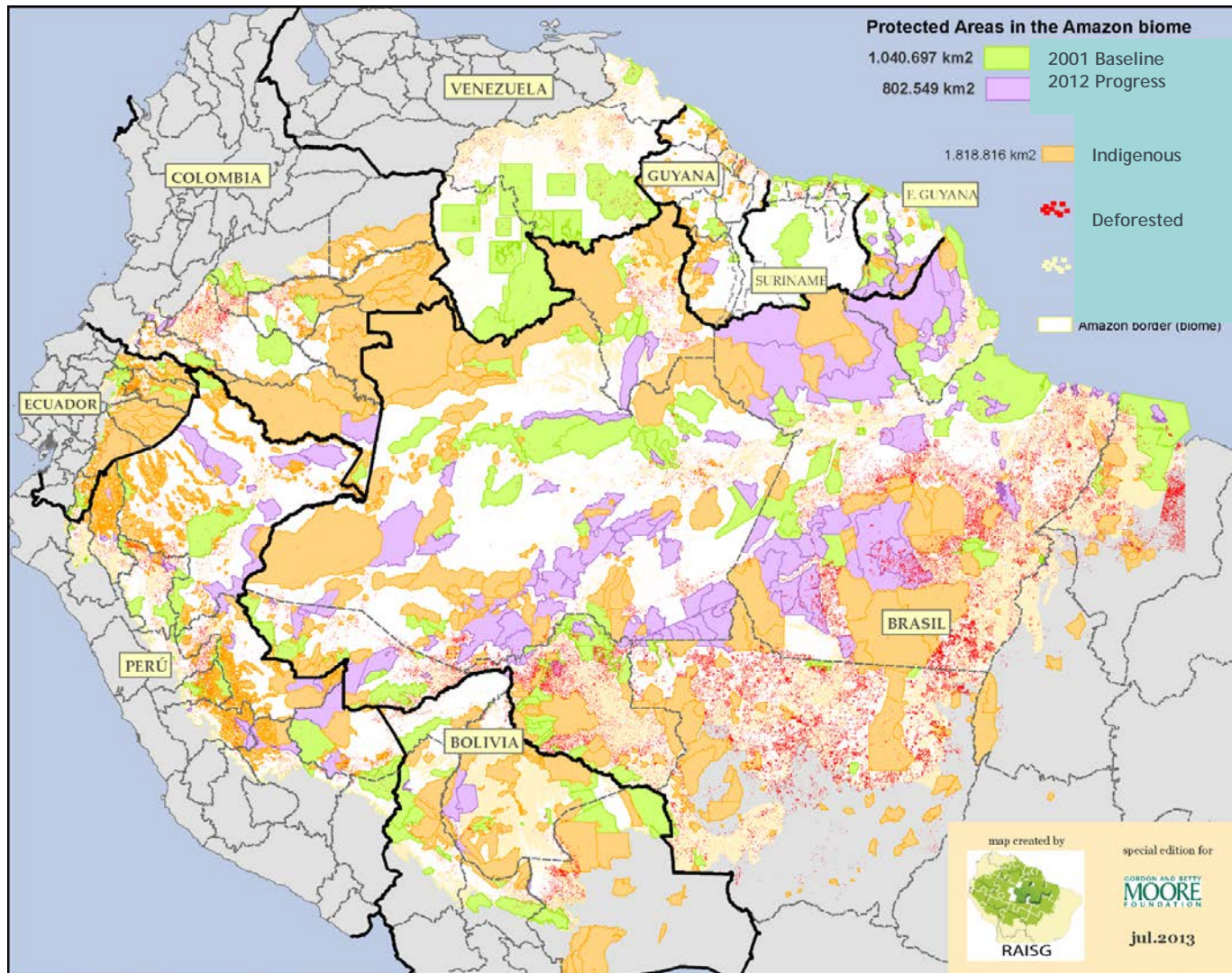
Elizabeth O'Neill, Independent Consultant
(and former Moore Interim Evaluation Advisor)

CMP Technical Meeting, 7 October 2014

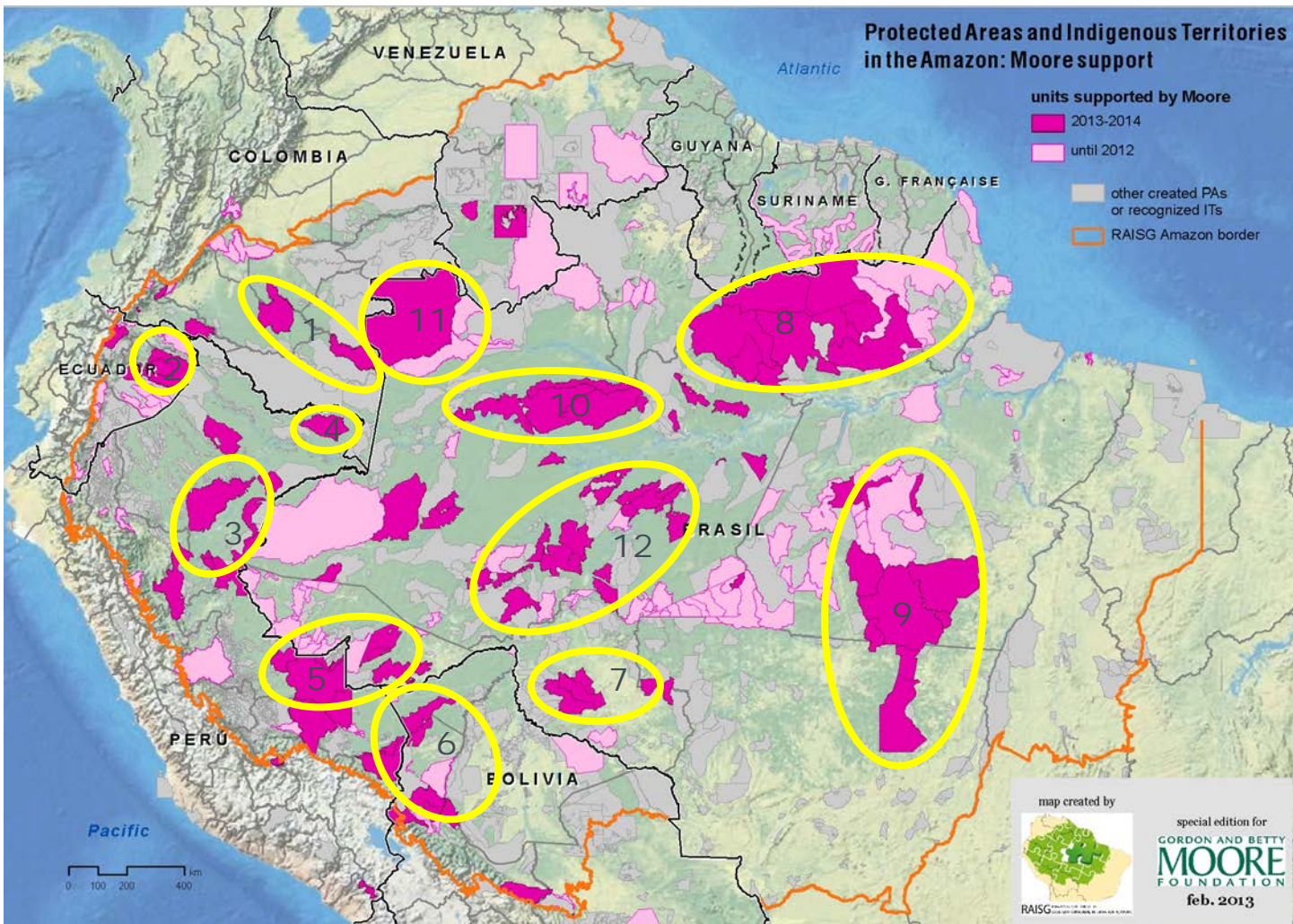
Amazon 2001 PA Baseline



Amazon Conservation Area Status 2012 with Indigenous Areas



AAI Priority PA Mosaics



DESIGNING AAI M&E: WHAT QUESTIONS DID WE WANT TO BE ABLE TO ANSWER?

Two time-scales for assessment

- Regular, 'real-time' feedback (POs constantly; Initiative semi-annually?)
- Periodic evaluation (External evaluation)

But questions are the same...

- Are we doing the right things? (Relevance)
- Are we doing things right/well? (Efficiency)
- Are we moving things in the right direction? (Effectiveness)
- Are we ultimately driving meaningful change? (Impact)
- Will our results last? (Sustainability)
- And of course, based on answers to the above: What can we do better??

A FEW DESIGN CONSIDERATIONS

- Right info to answer the key questions
- Do-able/Usable
- Toyota versus Tesla
- Responsive to several users/audiences:
 - Broad applicability to grantee partners
 - AAI program director and officers (regular oversight)
 - Roll up for senior management & board

AAI M&E SYSTEM: EFFECTIVENESS

To assess EFFECTIVENESS, must know status of key factors targeted by each strategy.

Example—Strategy: System Sustainable Finance Mechanism for PA System

What AAI tracks annually:

- ***Stage of setup of each finance mechanism (1: Discussion/ Design, 2: Develop/ Set-up, 3: Funding/ Fundraising, 4: Implementation)***
- ***Extent to which funds in mechanism can meet recurring costs of targeted ha of PAs (measured in %)***

AAI M&E SYSTEM: EFFICIENCY

To assess EFFICIENCY, must track inputs and outputs

For each strategy, AAI tracks annually:

- **Grantmaking** in support of each strategy (USD)
- **Delivery of milestones** (Dropdown status menu--Abandoned: Not strategic; Abandoned: Not feasible; Advanced to next year; Achieved)

PA SYSTEM SUSTAINABLE FINANCE: MILESTONES

Ref #	Outcome Abbreviation	Milestone	Target Year	2013 Status	2014 Status	2015 Status	Notes/Comments
PA\$ 1.1	Finance mechanism	Deal to secure donor funds and leverage federal budget agreed by stakeholders.	2013	Achieved	N/A	N/A	
PA\$ 1.1	Finance mechanism	Legislation and policy created to secure permanent funding to protected areas.	2014	N/A		N/A	

AAI M&E SYSTEM: IMPACT

To assess IMPACT, must know biodiversity status:

Example of Unconstrained Initiative Outcome:

Biodiverse forest conserved and appropriately distributed across the basin.

What AAI tracks: Forest cover of the Amazon Basin

Example of Constrained Initiative Outcome: By 2016, forest cover loss and vulnerability to future deforestation & degradation is reduced in the PAs captured by the 12 priority AAI mosaics, as evidenced by reductions in mosaic 5-year (2018).

What AAI tracks for each mosaic: Forest cover change, 5-yr threat projections, 20-yr threat projections

2018 THREAT	1. Chiri-Caqueta			
	Jun 2013	Nov 2014	end 2015	end 2016
Regulated Threats				
Logging—Commercial	LOW			
Agriculture—Commercial	MEDIUM			
Grazing, ranching	HIGH			
Mining—Commercial	MEDIUM			
Oil & Gas	MEDIUM			
Roads	N/A			
Dams	N/A			
Waterways	N/A			
Unregulated Threats				
Illegal Logging	LOW			
Illegal grazing, ranching	LOW			
Hunting, Fishing	LOW			
Agriculture—Subsistence	LOW			
Mining—Artisanal	LOW			
NTFPs	LOW			
OVERALL THREAT RATING	HIGH			
2033 THREAT	1. Chiri-Caqueta			
	Jun 2013	Nov 2014	end 2015	end 2016
Regulated Threats				
Mining—Commercial	HIGH			
Oil & Gas	LOW			
Roads	LOW			
Dams	N/A			
Waterways	MEDIUM			
Unregulated Threats				
Climate Change (on forest)	N/A			
OVERALL THREAT RATING	HIGH			4

AAI M&E SYSTEM: SUSTAINABILITY

To assess SUSTAINABILITY (of results), must know status of “Durability Factors.”

For each mosaic, every couple of years, AAI assesses status of:

1. Knowledge (for mgmt., Including baseline conditions, regular monitoring)
2. Law & policy: policy, legislation, enforcement
3. Constituency: stakeholder mass, makeup, engagement & support
4. Capacity: stakeholder ability to affect change
5. Capital: conservation funding

Using qualitative scale of:

1. Factor is in a **POOR** state such that it significantly impedes conservation
2. Factor is in a **FAIR** state (i.e., somewhat impedes conservation)
3. Factor is in a **GOOD** state (i.e., not limiting but could be improved)
4. Factor is in a **VERY GOOD** state (i.e., ideal state for conservation)

Note: These complement individual PA consolidation factors that are also tracked

AAI M&E SYSTEM: PROS/CONS

Strengths:

- Limited number of indicators to track—can compare across mosaics
- Most factors tracked relevant to partners/grantees—working with them to collect/validate data
- Uses rating scales wherever possible/practical to enable analysis, promote consistency, and increase ease of updating (dropdowns)
- Rolls up to a dashboard
- Links \$ to results

Limitations:

- Supports correlation and contribution versus causality and attribution
- Although basic, still difficult to get data and find time to fill in
- Very pared down, but senior management still says too complicated
- Excel-based versus user-friendly relational database

GROUP DISCUSSION IDEAS

- Feedback?
- Examples of other approaches at similar scales (particularly in funder setting)
- How do you get the data you need and ensure quality? How do you ensure compatibility with grantee/partner information needs so you don't add transaction costs?
- How sophisticated do M&E systems need to be? Do we absolutely need to know attribution/direct causality? Does seeking that ideal impede M&E system effectiveness/use?